

**GI-ACE 고압전원장치 장비 사양서**

## 1 고전압 Power supply

1) MODEL 명 : SMART CCPS

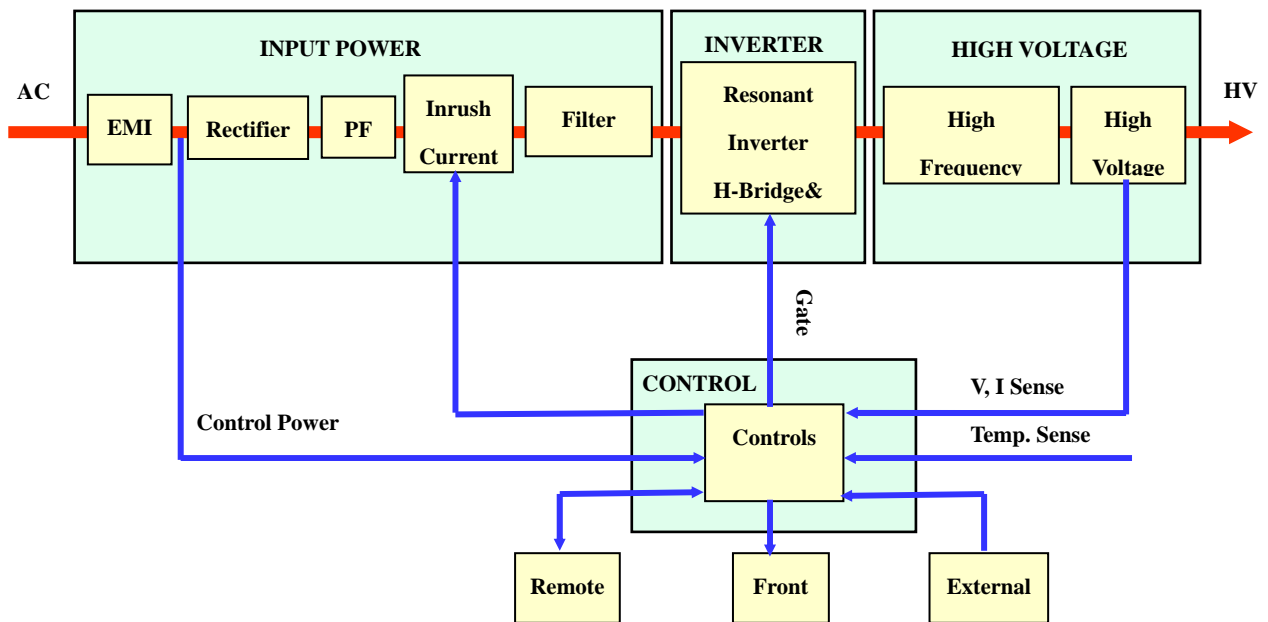
2) 사양

List		Data	Unit	Remark
Input Voltage		440V 3Ø	VAC	
Input power		5	kVA	
Efficient		90>	%	
Power factor		>0.85		
Output voltage		-40	kV	
Peak charging rate		5	kJ/sec	
Average Output current		100	mA	연속 최대출력
Constant DC power		4	kW	
Cooling		Air blower		
Maximum Operating temperature		60	°C	
Protection		Over voltage		Output voltage sensing
		Over current		Output current sensing
		Over temperature		Temperature Switch
		External interlock		External Safety interlock
Interface signal	Remote	HV ON Monitor out		Open collector output
		Voltage monitor out	0 ~ 10	V output
		Current monitor out	0 ~ 10	V output
		Reference out	10.000	V Voltage output
		End of charge out		Open collector output
		CCPS Fault out		Open collector output
		Remote enable in		Input
		HV ON/OFF input		Input
		HV ON/OFF output		output
		Program voltage Input	0 ~ 10	mA Input
	Program current Input	0~ 10	mA Input	
	Common	Trigger enable		Input
		Trigger in		Input
		Switching trigger out		output
HV Inhibit In			voltage signal(24V)	
Display		voltage	0.0 ~ -40.0	kV
		current	0.0 ~ 100.0	mA
		Fault status led	Yellow Lamp	
		HV on signal led	Red Lamp	

3) 사진



4) 내부 LAY OUT



2 고전압 Control panel

1) MODEL 명 : SMART CCPS CP

2) 사양

- 입력전원 : 단상 220V, 3 상 440V

- 전원 출력 : Controlled Power output 단상 220V, 3 상 440V

- Control signal INPUT :

출력 전압 지령신호 (4 – 20mA)

출력 전류 제한 신호(4 – 20mA)

E-stop

출력전압 ON/OFF

Remote Enable

- Control signal OUTPUT

출력전압 Monitoring 신호(4 – 20mA)

출력 전류 Monitoring 신호(4 - 20mA)

출력 HV ON 신호

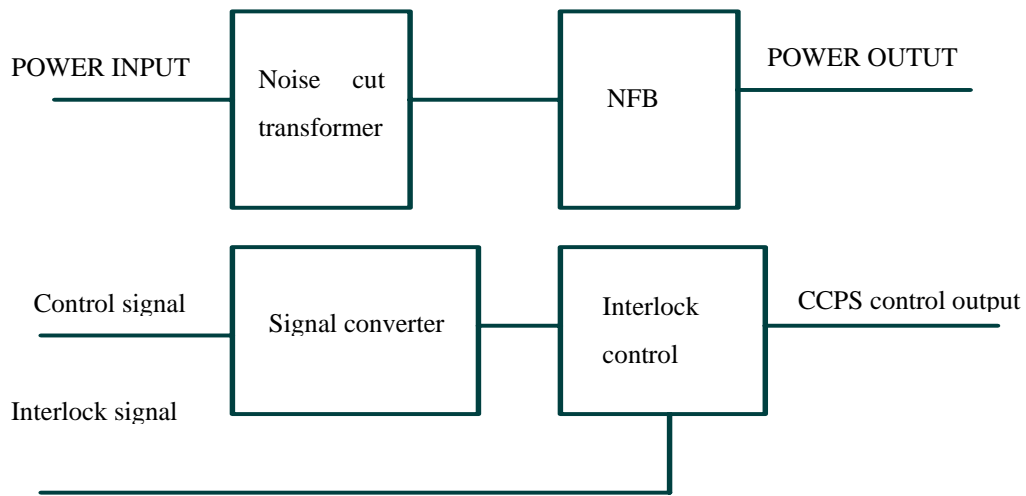
전원장치 Fault

Door open

3) 사진



4) 내부 LAY OUT



3 고전압 보호 Panel

1) MODEL 명 : SMART TANK

2) 사양:

입력 : 0 ~ -40kv DC

출력 : 0 ~ -40kv DC

보호 기능 : 부하단락

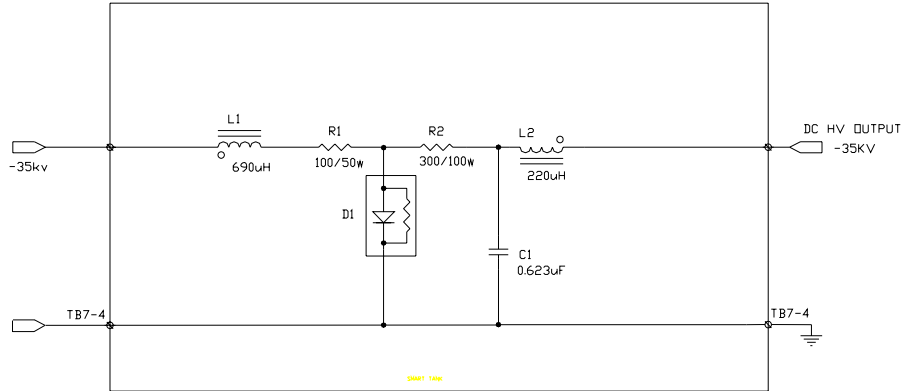
Protection Energy : 32J

Fault current : 400A

3) 사진



4) 내부 Layout



10 외형



---

4. 고압 Cable

1) MODEL 명 : DS2124

2) 사양

절연 내력 : 100kv

Jacket Material : PVC

Conductor diameter : 131 [mm<sup>2</sup>]

Maker : Dielectric science CO.

구매단위 : 300m 이상

3) 사진

